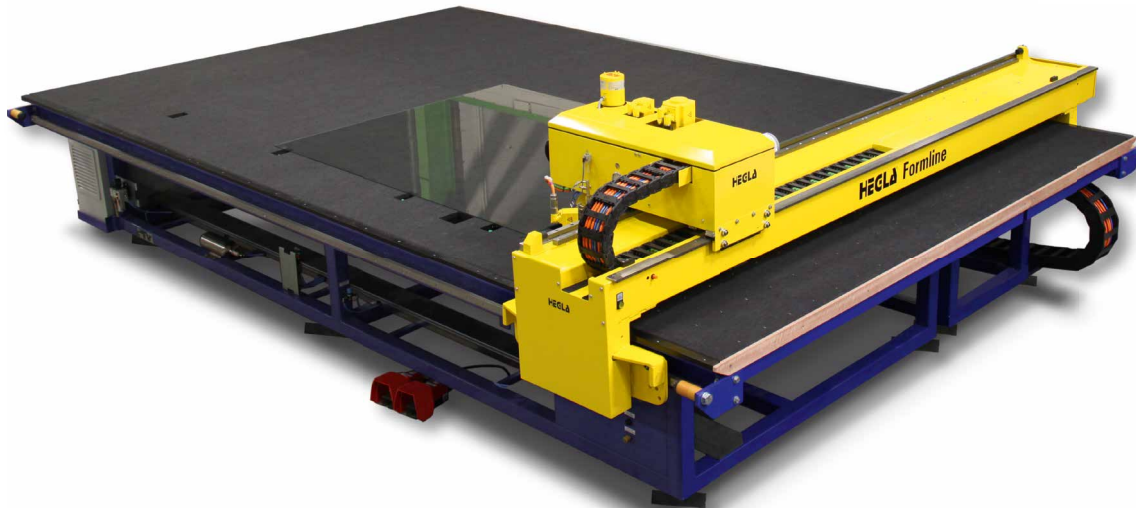


FORMLINE F

CNC Shape Cutting Machine for Free Fall Loading



The compact cutting table FORMLINE F was designed for processing float glass on a single machine. Because of its accuracy in shape and straight cutting it fulfills all demands of industrial production. Glass can be loaded onto the table using free fall. Due to its compact design the FORMLINE F is ideal for special cutting jobs for float and patterned glass. It can also be used to support existing production lines.

- Automatic shape cutting system with CNC positioning drives (digital servo drives)
- Cutting pattern design via fully graphical software with an integrated shape catalogue
- Multi-Tasking: data input and transfer while the cutting process is running
- Operation panel with Windows PC, 22-inch screen, DVD drive, USB port
- Glass thickness as standard 3 to 12 mm
- Cutting speed: $V = 120 \text{ m/min}$,
- Cutting accuracy: $\pm 0,25 \text{ mm}$ with glass size $1.000 \times 1.000 \text{ mm}$
- Air floatation via heavy duty blower
- Cutting pressure adjusting via proportional valve
- The FORMLINE F is available in various sizes:
 - FORMLINE F 3326: sheet size max. $3.300 \times 2.550 \text{ mm}$
 - FORMLINE F 3728: sheet size max. $3.700 \times 2.800 \text{ mm}$

Options:

- HEGLA FreeForm Shape Software with DXF import
- Soft Coat Low-E edge deletion via 20mm abrasive disc or TWIN Edge Deletion with an 20mm abrasive disc and an additional 10mm one for glass perimeter
- Optimisation software
- Built-in breaker bars



High Performance
in Glass Handling and Cutting

HEGLA
Industriestr. 21
D-37688 Beverungen
Tel.: 0 52 73 / 9 05-0
Fax: 0 52 73 / 9 05-2 55
E-Mail: info@hegla.de

HEGLA
Industriestr. 27
D-74589 Satteldorf
Tel.: 0 79 51 / 94 35-0
Fax: 0 79 51 / 94 35-50
E-Mail: info@hegla.de

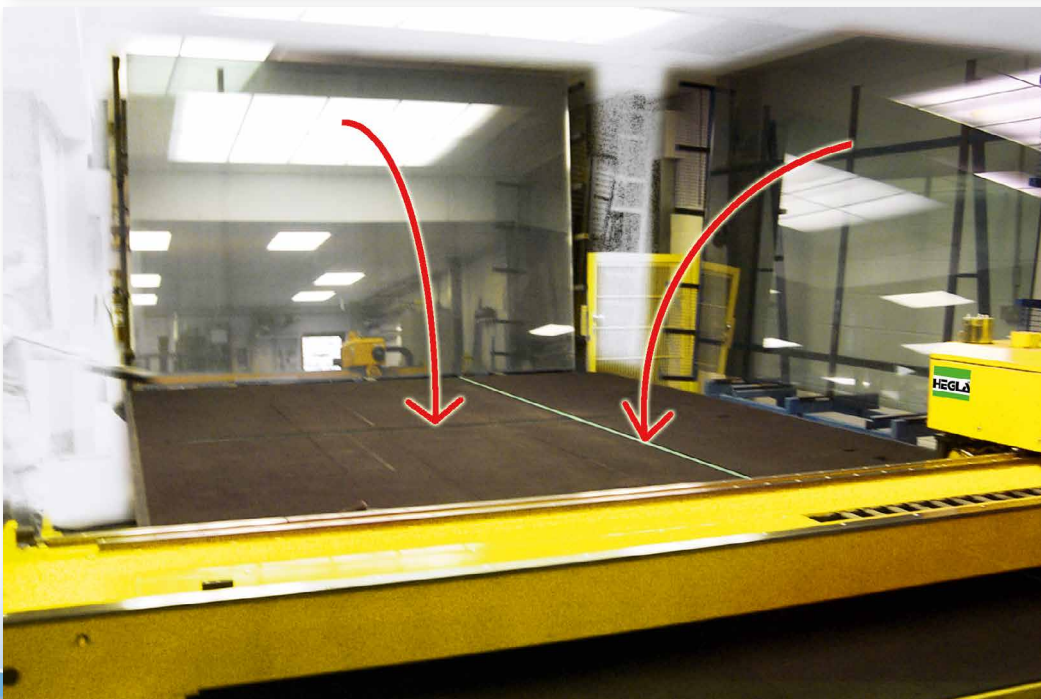
HEGLA
Industriering 5
D-06712 Kretzschau
Tel.: 03 44 25 / 5 01-0
Fax: 03 44 25 / 5 01-29
E-Mail: info@hegla.de

glass technology

HEGLA[®]

FORMLINE F

CNC Shape Cutting Machine for Free Fall Loading

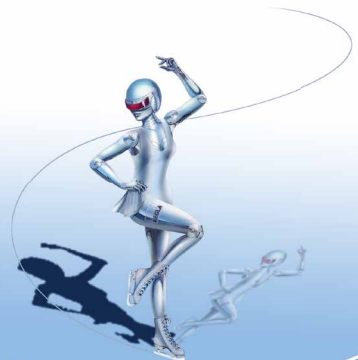


High Performance
in Glass Handling and Cutting

HEGLA
Industriestr. 21
D-37688 Beverungen
Tel.: 0 52 73 / 9 05-0
Fax: 0 52 73 / 9 05-2 55
E-Mail: info@hegla.de

HEGLA
Industriestr. 27
D-74589 Satteldorf
Tel.: 0 79 51 / 94 35-0
Fax: 0 79 51 / 94 35-50
E-Mail: info@hegla.de

HEGLA
Industriering 5
D-06712 Kretzschau
Tel.: 03 44 25 / 5 01-0
Fax: 03 44 25 / 5 01-29
E-Mail: info@hegla.de



hegla.com